

Ear, Nose and Throat
Physician & General
Practitioner's

Lyric FAQ



Lyric

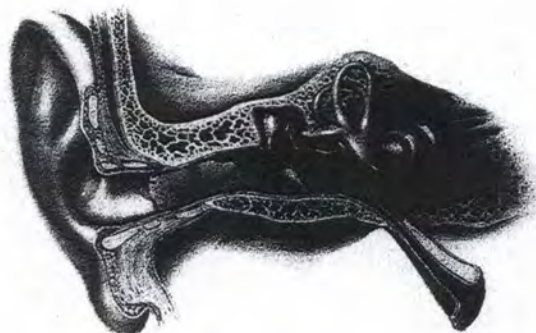


Hearing & Audiology

Suite 36, Crossways Shopping Centre
Cnr Rokeby & Bagot Rds
SUBIACO WA 6008
08 9388 8003

PHONAK
life is on

General Information



What is Lyric Hearing?

Lyric is the only 100% invisible extended wear hearing aid that is worn 24 hours a day, seven days a week, months at a time. Unlike many other hearing aids, Lyric is positioned completely inside the ear canal, and it uses the ear's anatomy to provide natural sound quality.

How long has Lyric been on the market?

Lyric has already been available in the USA since January 2007 and has established itself as an alternative to other forms of hearing aid: more than 10,000 customers have already opted for this solution. Studies have provided evidence of the reliability of Lyric and the satisfaction of its users.

What type of hearing aid is Lyric?

Lyric is a homologized, CE certified Class 2a (CE) or Class 1 (FDA) medical device. It is included in the same product category as all other hearing aids.

Does Lyric require any surgical intervention?

No. The Lyric fitting process is quick and completely painless for the patient. After the ear canal has been inspected with the help of the microscope, the audiologist measures its length and dimensions using a depth sizer (similar to an in-situ probe tube) and a lateral sizer respectively. He then uses these measurements to determine whether the ear canal is suitable for fitting with Lyric. It is not necessary to take any impressions of the ear canal and no anesthesia is required.

Is it painful to insert and wear Lyric?

No. The Lyric fitting process is quick and painless for the patient. The user may experience a little discomfort as they are getting used to the device, which has been empirically shown to last from a few hours to a maximum of five days. If any pain does occur, however, the device should be removed immediately. Otherwise, the customer should no longer be able to feel the device once they have got used to it. Customers generally undergo a trial period of 30 days before deciding whether they want to wear Lyric on a long-term basis.

Under what circumstances would cause Lyric to be contraindicated?

Lyric is not for everyone. The hearing aid is suitable for mild to moderate hearing loss. The length of the ear canal must be at least 20 mm, while at the same time it must follow a relatively straight course and its shape must be as rounded as possible. The medical exclusion criteria include chronic otitis media, abnormalities in the ear canal or regular medical examinations that require an MRI scan. In case of doubt, the audiologist must send the customer to the ENT doctor for medical clarification. Lyric is not a suitable hearing aid for customers who regularly go diving or skydiving.

Can Lyric users swim with Lyric?

Swimming with Lyric is possible if a custom swim plug is worn. However, it is not advised if the user swims on a regular basis.

Can Lyric be operated by the user?

Yes. The SoundLync remote control included with Lyric enables the reader to easily switch the device on and off and adjust the volume.

The user can easily remove the device himself – with the help of the removal tool integrated into the SoundLync – or have it removed by the hearing care professional. It is not possible to reinsert the device, and any new device must be fitted by a qualified hearing care professional.

Does the ear canal have to be cleaned during the period when Lyric is being worn?

No more wax can be removed once Lyric has been inserted and the use of cotton buds should also be avoided. If necessary, wax can be removed before a new device is inserted by an Ear-Nose-Throat doctor.

What happens if the device is removed?

Lyric cannot be reused once it has been removed. It must be reinserted by an authorized Lyric hearing care professional. If the device is removed during a visit to the ENT doctor, it must be returned to the audiologist to be disposed of properly.

How many devices are included in a Lyric annual subscription?

Based on experiences in the USA, patients are entitled to up to seven devices per subscription. Each time a device is replaced, the patient will be provided with the latest up-to-date Lyric technology.

Will an MRI, X-ray, or CT scan damage Lyric or place the ear at risk?

Lyric must be removed before you have an MRI.

Will radiation to the head damage Lyric or place the ear at risk?

Customers who have had radiation to the head or neck EVER are contraindicated

Are bone density scans okay?

Yes. There is no magnetism used during bone density scans, CT scans, or Xrays.

Are Positron Emission Tomography (PET) scans safe?

PET scanning is safe, as it involves ionizing radiation and no magnetism.

A Lyric user is having surgery under general anesthesia; does Lyric have to be removed?

Advise the Lyric user to speak with their doctor prior to the surgery to make them aware of Lyric.

If a Lyric user has a pacemaker and/or defibulator can he / she be fit?

Lyric hearing aids will not interfere with the pacemaker. However, the magnet used to change Lyric settings can affect the pacemaker if placed near the chest. A Lyric user with a pacemaker should make sure to keep the keychain magnet shielded and carry it in a pants pocket rather than in a shirt pocket.

Can a cell phone / home phone be used while wearing Lyric?

Yes, one of the benefits of Lyric's placement is that it can be worn while talking on the cell phone/ home phone. In fact, Lyric can be worn during your daily activities – such as sleeping, showering, exercising, and using headphones.

Can a child wear Lyric?

Yes, as long as the ear canal is the minimum size. However, due to the initial adjustment phase and possible discomfort, Lyric is not recommended for children under 16 years of age.

What should be done if the ear hurts?

There might be some initial discomfort that can last for 2 days to 2 weeks. If discomfort continues or pain develops, the Lyric user should see his / her Hearing Care Provider for an evaluation or remove it with their sound lync removal tool.

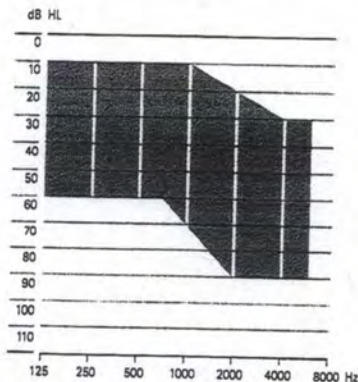
Is Lyric safe?

The hearing aid has been safely used by thousands of clinical research customers since 2001 and was first launched commercially in January 2007 in the United States. Currently over 10,000 Lyric users are wearing Lyric.

Can Lyric users take the Lyric hearing aid out?

Lyric can be self-removed if necessary. Lyric users are provided with a removal tool that is built-in the SoundLync.

LYRIC FITTING RANGE



Who is a good Candidate for Lyric?

Lyric is designed for people with mild to moderately severe hearing loss. A Lyric trained hearing care professional will assess a customer's hearing loss, ear size and shape, general health of the ear canal, and lifestyle to determine if Lyric is right for them. Approximately half of the people with hearing loss may be Lyric candidates. The hearing loss may be sensorineural, conductive or mixed as long as there are no other contraindications [which must be referred to a medical practitioner].

Can Lyric be fit on someone with otosclerosis?

Yes, as long as it has not been a recent stapedectomy and the tympanic membrane is intact. Medical clearance may also be advised.

A customer received clearance from ENT to be fit again after ear canal trauma, but it still looks bruised, what needs to be done? It has been over 2 weeks.

If the "bruise" is still sore, the customer should wait to be refit. If not, proceed (as long as there is no swelling, scabbing or abrasion).

The customer has a small perforation of the TM, Can he / she be fit?

No, customers with TM perforations are contraindicated.

A customer is on blood thinners can he / she be fit with Lyric? This is a long time customer and has had cerumen removal done in the past.

It is recommend obtaining medical clearance from the customer's managing physician prior to placing Lyric on customers taking prescription blood thinners.

Can Lyric be fit to a customer with exostosis?

No. Both osteomas and exostosis are bony growths/malformations that tend to be very sensitive and can potentially be painful when a Lyric hearing aid rests on them.

Does moisture accumulation (MA) require medical intervention?

According to recently published data of 900+ Lyric patients, no medical intervention was required in the case of MA between the Lyric and tympanic membrane (see Lyric Safety Study article). However, it should be noted that a 10 to 14 day rest period is recommended before refitting.

Is there any possibility of battery contact in the ear canal?

In this respect, Lyric is safer than ordinary hearing aids as the battery is completely incased in the hearing aid and therefore cannot come into contact with the skin of the ear canal.

Who can place the hearing aid in the ear?

Lyric can only be placed by Lyric trained hearing professionals. At a customer's initial visit, the Lyric trained hearing professional evaluates the ear, sizes for Lyric, and places the hearing aid(s).

How long does sizing, placing and programming Lyric take?

Sizing, placing and programming Lyric, along with new customer counseling, takes approximately 1.5 hours. Hearing aid replacement visits take approximately 30 minutes.